



co.space

2013
REPORT



The co.space is a global network of homes for world-changers. We take driven students and experienced changemakers and place them all together under one roof.

We then give them one goal.

To go and make the world a better place.

A. Christian Baum & Spud Marshall

2013

END OF THE YEAR REPORT

TABLE OF CONTENTS

FINANCIAL DATA	3
APPLICATION PROCESS	4
RENOVATION PROCESS	5
STRUCTURAL LAYOUT	6
RETREATS & MEETUPS	7
GUESTS & VISITORS	8
COMMUNITY EVENTS	9
MEDIA & RECOGNITION	10

FINANCIAL DATA

BUILDING THE FINANCIAL FOUNDATION FOR THE BROADER CO.SPACE INFRASTRUCTURE

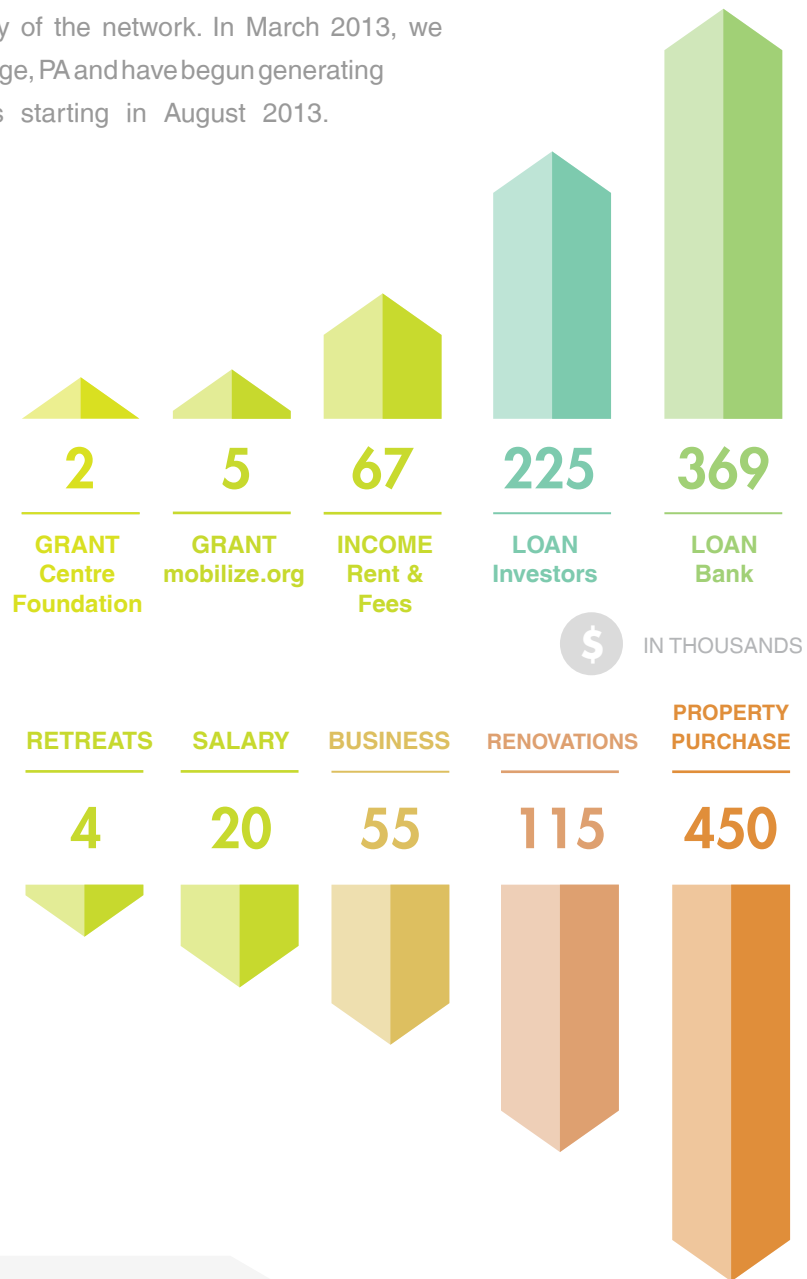
We have seen many similar initiatives fail because they lacked a sustainable business model that not only maintained the physical spaces, but supported a core leadership team to oversee the growth and vitality of the network. In March 2013, we purchased the first property in State College, PA and have begun generating revenue from rent and program fees starting in August 2013.

\$ 668k



\$ 644k

NET 24k



FOUNDATIONS

EXPENSES

ASSET \$1M PROPERTY

EQUITY \$380k est.

APPLICATION PROCESS

SELECTING THE MOST DRIVEN, POSITIVE AND PASSIONATE INDIVIDUALS FOR THE HOME

Start with “The success of the co.space ultimately hinges on curating the right tenants - who make up the DNA of our homes. Together they create a tight-knit group of friends, role models, allies, and inspiration for one another. Students complete a written application and undergo an in-person interview with the directors and representatives from the home. Young professionals are then hand selected to best match the unique nature of each year’s class.

69

total applicants

15

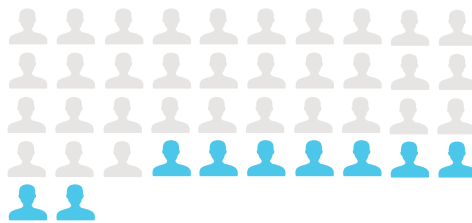
Penn State colleges represented

20

very happy residents!

2012
-2013

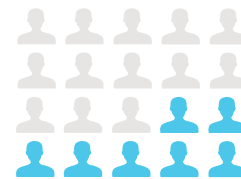
APPLIED



33 STUDENTS

9 YOUNG PROFESSIONALS

ACCEPTED



14 STUDENTS

6 YOUNG PROFESSIONALS

2013
-2014

APPLIED



25 STUDENTS

2 YOUNG PROFESSIONALS

ACCEPTED



6 STUDENTS

1 YOUNG PROFESSIONALS

13 RETURNING

RENOVATION PROCESS

THEY SAID IT COULDN'T BE
DONE. WELL, A FEW BEERS AND
CHOCOLATE BARS LATER...

During the summer of 2013, countless long days and nights were spent renovating and designing the flagship home of the co.space network. With not a single surface (other than the ceilings) untouched, the property underwent a complete transformation. Serving as a living laboratory for innovation, the property contains a waterplace (fireplace with a waterfall inside), mine shaft guest room, walk-through living plant wall and a 20' live edge wood table made from a 300-year old apple tree. Needless to say, the house is unlike any other home.



3 MONTHS OF WORK



50 + VOLUNTEERS



7k + VOLUNTEERED HOURS



2 INJURIES! BUT WE'RE OK...



6 FALSE FIRE ALARMS



3,500 LBS. OF IKEA FURNITURE



5,025 SQ. FT. RENOVATED



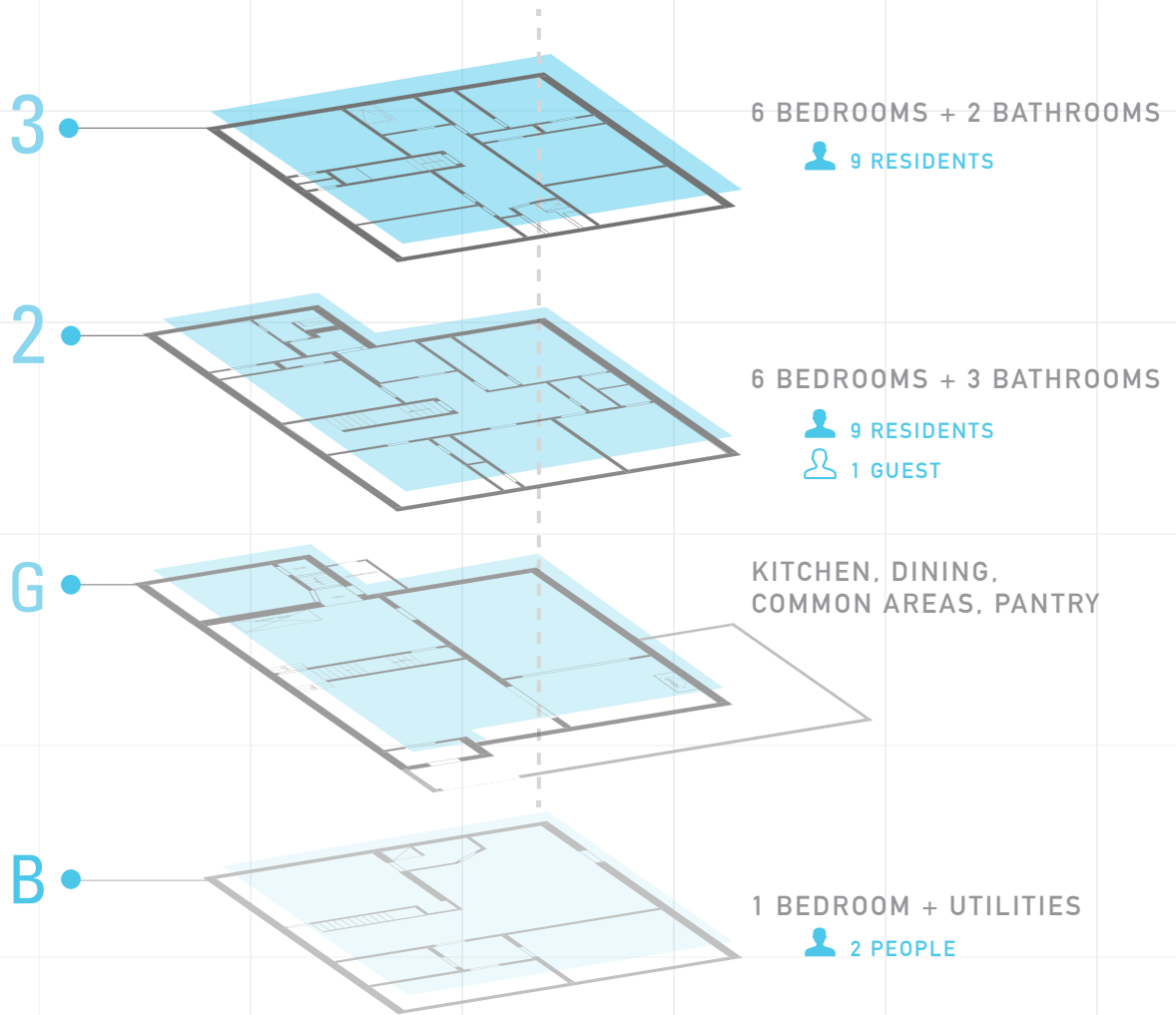
135 SQ. FT. OF WHITEBOARD SURFACE



119 LIGHT BULBS

STRUCTURAL LAYOUT

FOUR LEVELS OF PURE CREATIVITY, INNOVATION, COLLABORATION AND LAUGHTER



STUDENTS 14   6 BATHROOMS

YOUNG PROFESSIONALS 6   13 BEDROOMS

RETREATS & MEETUPS

PRIOR TO LAUNCHING THE PROPERTY, WE HOSTED A SERIES OF RETREATS AND MEETUPS



Whipple Dam Retreat

AUGUST 2013

To start the semester off with the first class of co.spacers, we held a day-long retreat at a local state park. The purpose of the day was to discuss personal and collective goals for the year and how we as community can best support one another. We also shared personal journeys for what lead each resident to the co.space and what they are looking for from the experience.



Inaugural Kick-off Retreat

DECEMBER 2012

Over the course of the weekend, we facilitated a lot of workshops to imagine what the home will look like. Additionally, this weekend was a time to get to know one another and begin setting some objectives for what we personally each want to get out of this experience.



Mentor Meetup

APRIL 2013

On April 28th 2013, we brought together some of the student co.space residents and local community members for a chance to meet one another. Often times, students are not given the opportunity to interact with local residents on a regular basis. One aim of the co.space is to foster these connections on a more regular basis so that deeper friendships and relationships can be developed between the town and gown.

16 RESIDENTS + 7 COMMUNITY

GUESTS & VISITORS

OUR HOME IS YOUR HOME.
CHECK OUT THOSE WHO
DARED TO STAY OVER!

A dedicated guest room in the State College co.space allows for visiting speakers, Penn State alumni, entrepreneurs and mentors to stay in the home. We had a wide variety of guests this year and the majority of them interacted with the residents through a meal or hanging out in the common areas, providing direct connections and resources to the residents.



COMMUNITY EVENTS

MONGOLIAN MUSICIANS AND TECH ENTREPRENEURS AND SUSTAINABILITY CONSULTANTS, OH MY!

387 TOTAL PEOPLE

300 **87**

COMMUNITY MEMBERS
CO.SPACE RESIDENTS



A SHARED EXPERIENCE



Community Dinners and Breakfasts are a chance for both residents and community members to share a meal with individuals they otherwise wouldn't get the chance to meet with.



MEDIA & RECOGNITION

HERE'S TO THE MOMENTS WHEN WE STUCK OUR HEAD OUT TO SHARE THE WORK WE'VE BEEN UP TO!

12 
**PRESS
ARTICLES**

 **705
LIKES** 

WEBSITE



JAN 2012 - DEC 2013

4,314 UNIQUE VISITORS

17,906 PAGE VIEWS

6,294 VISITS

69% NEW VISITS

AWARDS



Mobilize.org

Pennsylvania Millennial Civic Engagement Winner

Winner of \$5,300 from Mobilize.org to implement the co.space. Judging was based upon potential social impact, creativity and innovation, sustainability, and the use of new and social media.



AshokaU & GOOD Maker

Disruptive Innovation Winner

Recognized as one of the top disruptive innovations to emerge out of the 2012 Ashoka U Exchange, a gathering of over 400 entrepreneurial leaders and innovators in higher education.



Echoing Green

2013 Semi-Finalist

Recognized as one of the top disruptive innovations to emerge out of the 2012 Ashoka U Exchange, a gathering of over 400 entrepreneurial leaders and innovators in higher education.



Peace Child International

Green Economy Eco-Business
Innovation Initiative Winner

Recognized as one of the top disruptive innovations to emerge out of the 2012 Ashoka U Exchange, a gathering of over 400 entrepreneurial leaders and innovators in higher education.